

> IAH SERIES

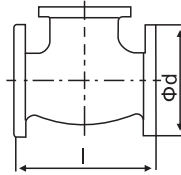
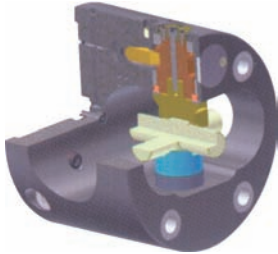
自動分度卡盤

AUTO-INDEXING CHUCK

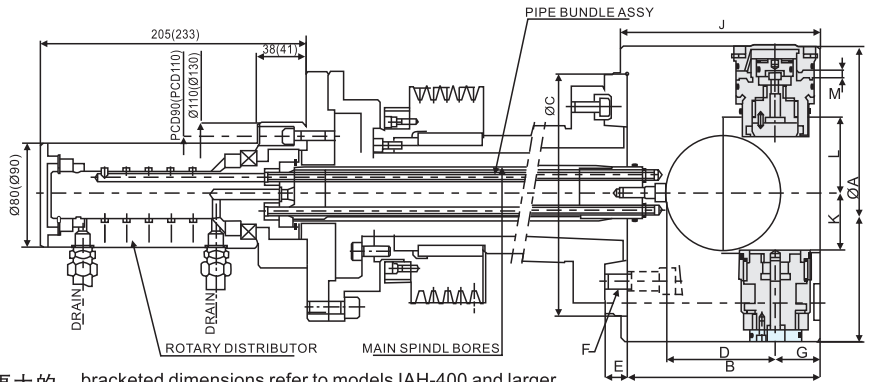
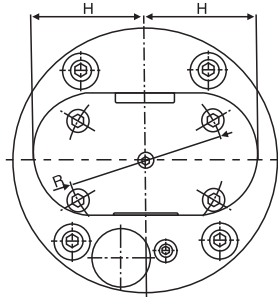


- ◎ 一次夹持就可以进行多面加工
- ◎ 机械主轴在回转中也可以自动移换角度
- ◎ 内装止回阀，在发生停电等紧急情况时也可以确保安全性
- ◎ 可以分割成4x90°、8x45°，获得高分割精密度
- ◎ Machine multiple surfaces in a single clamping
- ◎ On-the-fly indexing
- ◎ Accurate, durable indexing system
- ◎ Index positions 4x90° or 8x45°

◎ SPECIAL CHUCK



	最大工件尺寸 Max. Workpiece Size	
	Φd[mm]	l[mm]
IAH-225	60	100
IAH-250	65	160
IAH-275	80	220
IAH-315	100	230
IAH-350	135	240
IAH-400	170	260
IAH-500	220	310
IAH-670	300	400



括号内的尺寸是产品型号IAH400和更大的 bracketed dimensions refer to models IAH-400 and larger.

型號 Model	ØA	B	ØC(h7)	D	E	F	G	H	J	K	L	M	ØR
IAH-225	225	149	185	84	25	M12	35	95	154	46	58	11.5	133.4
IAH-250	250	185	210	113	25	M12	40	106	190	46	55	20	133.4
IAH-280	280	208	210	125	25	M16	48	125	213	57	67	20.5	171.4
IAH-315	315	227	235	136	25	M16	50	136	232	70	85	22	171.4
IAH-350	350	235	290	148	30	M20	50	145	240	84	102	23	235
IAH-400	400	253	290	160	30	M20	60	165	259	100	114	30	235
IAH-500	500	301	380	200	35	M20,M24	68	205	308	133	157	35	235
IAH-670	670	465	380	286	40	M24	90	275	470	176	214	40	330.2

Type	夾緊力 (kgf) Max. Clamping Force	主軸孔徑 (mm) Main Spindle Bore	最高回轉速 Max R.P.M	重量 Weight (kg)	慣性矩 kg·m ²	最大工件尺寸 Ø Max. Workpiece Size	
						S(mm)	T(mm)
IAH-225	1270	OVER45	2800	29	0.9	60	100
IAH-250	1730		2400	44	1.7	65	160
IAH-280	2550		2000	56	2.8	80	220
IAH-315	2550		1800	75	5.0	100	230
IAH-350	2550		1800	100	8.0	135	240
IAH-400	3530	OVER55	1200	145	15.0	170	260
IAH-500	4670		900	230	25.4	220	310
IAH-670	5890		600	540	32.5	300	400

* 保留技術更改的權利，恕不另行通知 Subject to technology changes without prior information
 * 非標需求可訂做 Non-standard requirements can be made